

A happy family makes a happy expat!

Are you looking for the ideal home for your expat? Then you are in luck! We are selling our villa, which is in top condition.

It offers everything your expat could ever want.

And, more importantly, what his partner and kids want.



A fast connection for your expat

Travelling to Brussels, Antwerp or Mechelen?

There is no faster way to get there than from this villa.

It is only a... two-minute drive to the Zemst exit onto the E19 Antwerp-Brussels. And the Mechelen railway station with *direct* trains to Brussels airport is only a few kilometres away.

A social life for his/her partner

No expat wants his spouse to waste away in a business area full of fellow-expat partners.

Not in this villa! The large garden and ample parking space make this house the place to be.

And this residential area with shops nearby will make any partner feel right at home.

A relaxed area for his/her kids

Your own floor and bathroom: what more could a child wish for?

Perhaps primary and secondary schools nearby, and international schools in Antwerp.

Or 170 hectares of wood, water and beach *with* sporting facilities as close as 500 meters.

And the Planckendael Park & Zoo is less than 5 kilometres away.

The perfect villa for your expat and his/her family? You will find it on the backside of this page.

Get in touch by phone (0496 58 01 06) or e-mail (gerard.depuydt@skynet.be).

We would be glad to show you around.

Yours sincerely,

Gerard Depuydt and Lut Lozie

PS Feel free to pass this letter along to others. Who knows, you might make their day!

For sale: beautiful villa in top condition in Zemst



The ideal home for your expat *and* his/her spouse and kids!

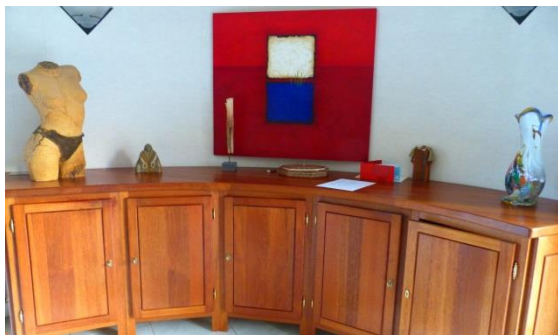
A modern villa with ample light thanks to the many windows and the glass finishing in the rooftop.

Ground floor: side entrance, hall, spacious living room with dining area, freestanding kitchen, master bedroom with bathroom, toilet. Electric shutters.

First floor: large, bright hallway with 4 bedrooms/ study/reception area and 1 toilet.

Basement and attics.

An interior full of character, with curved lines tastefully filled with unique, custom-made cupboards.



Direct access to the garden from the living room *and* the kitchen, through sliding doors.

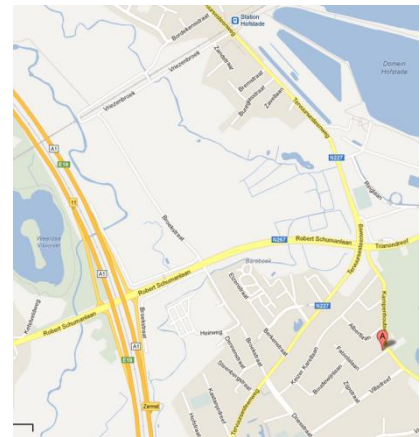
Large terrace with small pond, barbecue and garden with fruit trees.

Double carport and garden shed *with* attic.

Large driveway and parking space.

Lot size 1000 m², 20 m street width.

Finished with high-quality materials. Well-kept and ready to move in. Immediately available.



10 min. from Brussels airport
2 km from exit E19 Brussels - Antwerp, 2 km from Hofstade station, 500 meters from sports- & recreation area Bloso Hofstade, 5 km from Planckendael park & zoo.

Price: 625.000 EUR **Contact Gerard Depuydt on 0496 58 01 06 or gerard.depuydt@skynet.be**